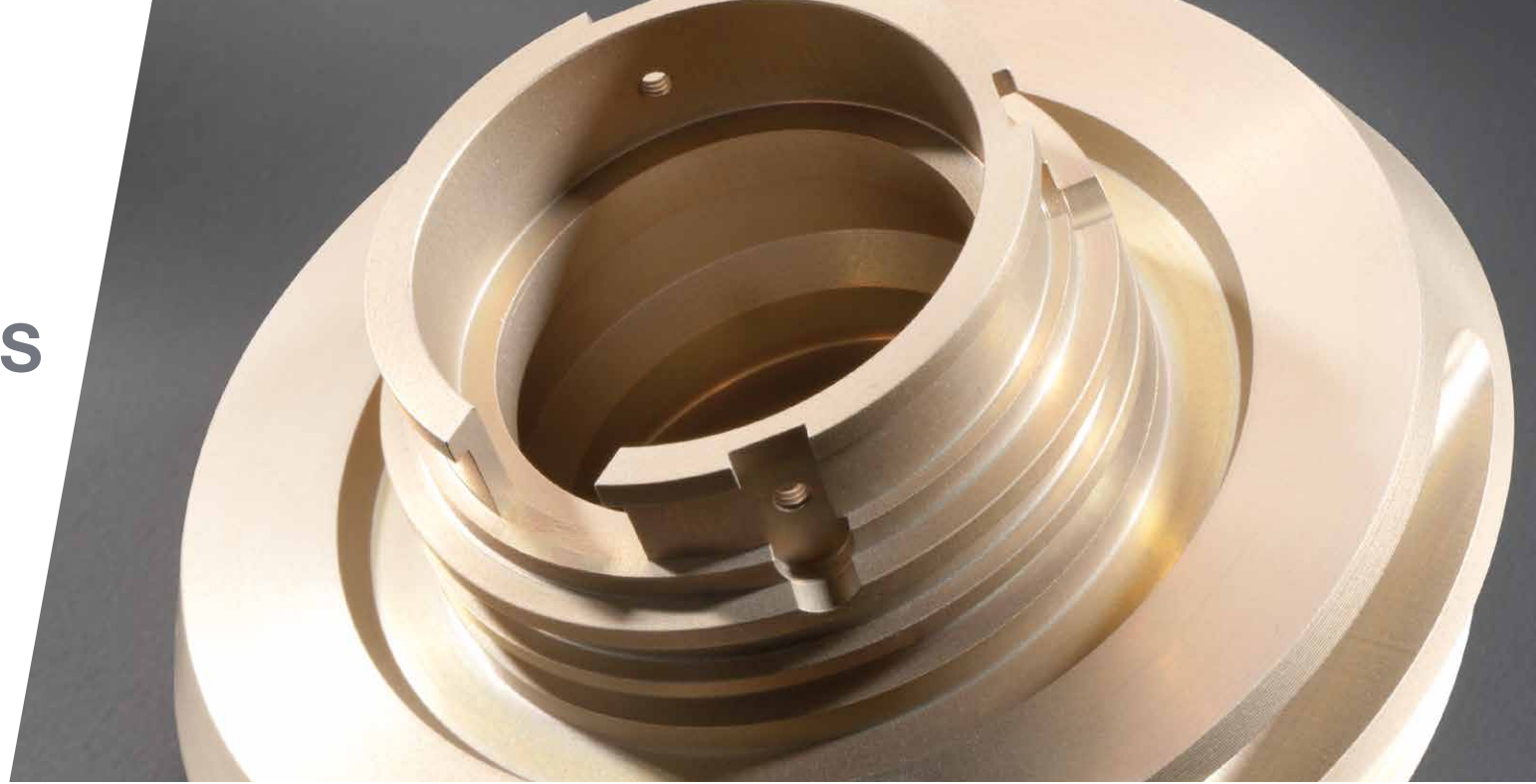


BULTECH
PRECISION

HIGH-TECH MACHINED PARTS



BULTECH PRECISION SA
Route des Rez 1
CH-1667 Enney

www.bultech.ch

THE COMPANY

Since 1989, Bultech Precision has been manufacturing mechanical parts and sub-assemblies using a variety of materials: steel, stainless steel, and aluminum, titanium, and copper alloys. We can accommodate small, medium and large batches. Boasting a new, modern, and efficient production facility, Bultech embodies the notion of «high-tech machined parts».



WHAT WE OFFER

Our facility is equipped with the newest generation of CNC machines that enable us to manufacture your mechanical parts with precision at very competitive prices. Whether for turning, milling, or grinding, we have the manufacturing equipment necessary to meet your needs. Our assembly shop complements our manufacturing team by supplying you with sub-assemblies, thus simplifying your product management and supply chain.



ENGINEERING

We are also able to provide engineering support from your product's inception, allowing your product to be manufactured as economically as possible while meeting all of your other requirements. Our experienced staff use CAD-CAM tools to optimize the manufacture of your parts.

LOGISTICS

Bultech offers a wide range of logistics concepts to streamline your supply chain, reduce costs, and expedite production.

QUALITY ASSURANCE

Our company has been ISO 9001 certified since 1996. Our air-conditioned metrological laboratory is equipped with the latest monitoring devices, ensuring that our products always meet your requirements.

TRAINING

We are proud to offer continuous training opportunities for 4 poly-mechanical apprentices, and we provide comprehensive training in our workshop, which is equipped with both traditional and CNC machines. We also train logisticians.

THE ADVANTAGES

Providing a comprehensive solution in terms of engineering, production resources, logistics concepts, and superior quality control, Bultech Precision can reliably meet all of your mechanical manufacturing and sub-assembly needs.



CNC TURNING

Our workshop is fitted with CNC machines using the latest technology. Combined with our staff's expertise, we manufacture complex parts in a cost-effective process.



HIGH-TECH
TURNING

CNC MILLING

With its state-of-the-art machines, most of them equipped with an integrated touch probe measuring system, our milling department manufactures cubic parts with a very high added value.



**HIGH-TECH
MILLING**

CYLINDRICAL & CENTERLESS CNC GRINDING

In order to maintain full control of the production line, grinding operations are carried out in our workshop.



**HIGH-TECH
GRINDING**

ASSEMBLY

Our facility offers the option of fabricating complete sub-assemblies, along with their standardized components (seals, springs, bearings, etc.). Upon request, we can also test the function of these sub-assemblies.

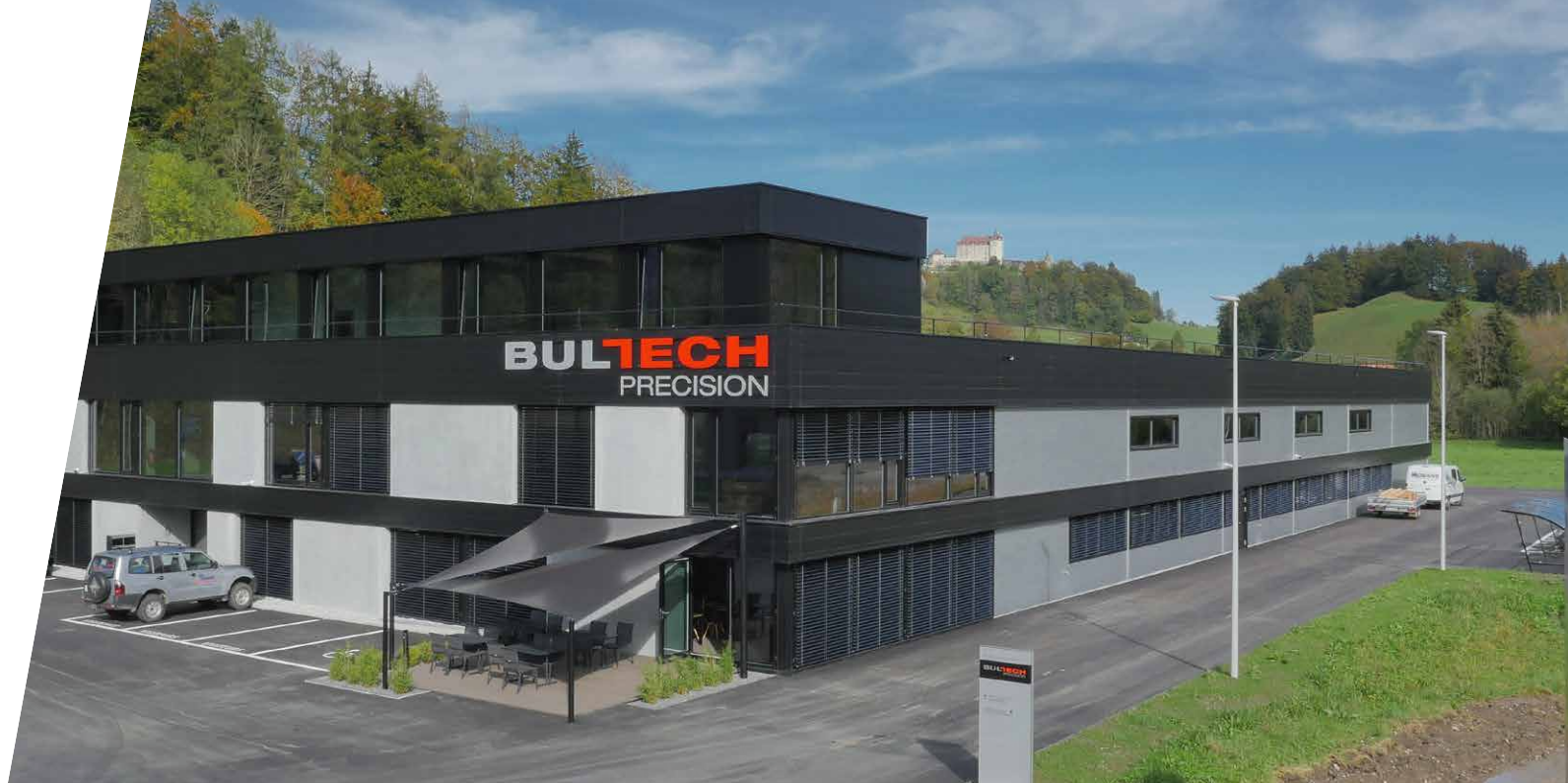


**HIGH-TECH
ASSEMBLY**

CONTACT

BULTECH PRECISION SA
Route des Rez 1
CH-1667 Enney

Tel. +41 26 919 10 70
Fax +41 26 919 10 71
admin@bultech.ch



WE ARE AT YOUR DISPOSAL

Jean-Marc Egger
Managing Director
Administrator
+41 26 919 10 70
jmegger@bultech.ch

Frédéric Vernier
Director
Administration & Sales
+41 26 919 10 76
fvernier@bultech.ch

Patrick Hayoz
Director
Production
+41 26 919 10 88
p.hayoz@bultech.ch

